

BAHRAIN BOURSE

EQUITY MARKET WEEKLY TRADING REPORT



@bahrainbourse



@bahrainboursebhb

www.bahrainbourse.com

Report from 2017-10-15 TO 2017-10-19

Index Activity of the week					
	Opening	Closing	Change	% Change	
Bahrain All Share Index	1274.75	1278.94	4.19	0.33	↑
Bahrain Islamic Index	1015.72	1035.5	19.78	1.95	↑

Bahrain All Share Index (Daily)

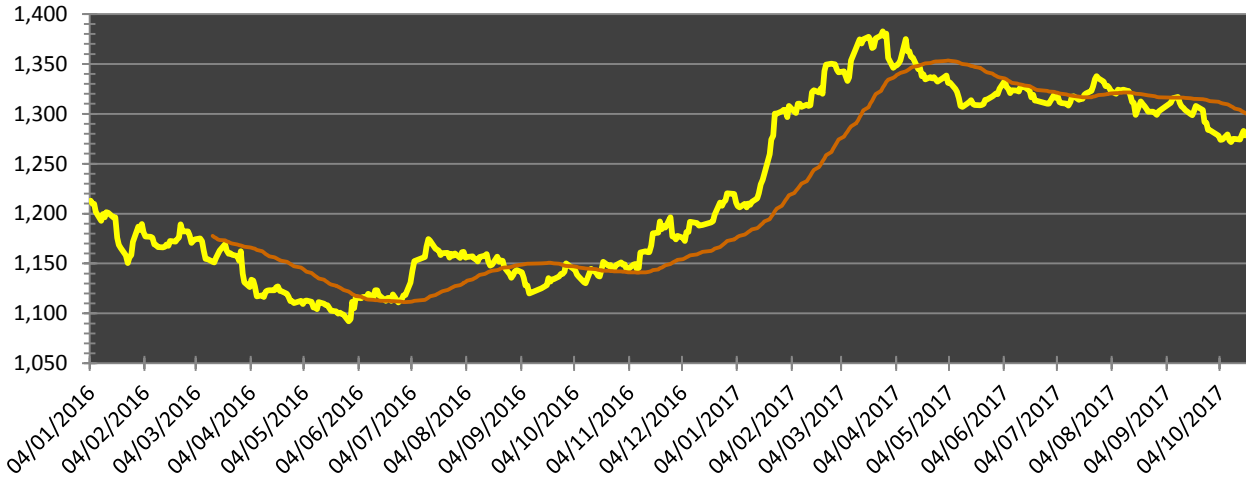


Chart Information						
	Start Point	End Point	High	Low	Change	% Change
Bahrain All Share Index	1213.11	1278.94	1,382.71	1,092.02	65.83	5.43% ↑

* The daily chart starts at Monday, January 04, 2016 and ends on Thursday, October 19, 2017

Bahrain All Share Index (Weekly)

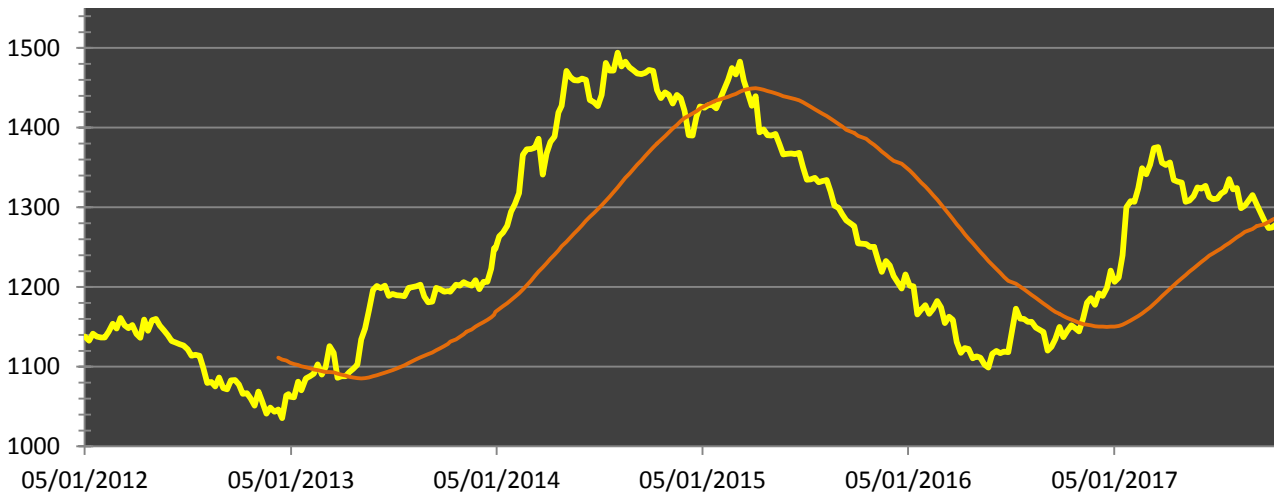


Chart Information						
	Start Point	End Point	High	Low	Change	% Change
Bahrain All Share Index	1137.72	1278.94	1,494.03	1,035.30	141.22	12.41% ↑

* The weekly chart starts at Thursday, January 05, 2012 and ends on Thursday, October 19, 2017

— 50 Day/Week Moving Average

Report from 2017-10-15 TO 2017-10-19

Price Movement and Fluctuation

Three Top Advancers

Company Name	Currency	Previous	Closing	Change	% Change
GFH FINANCIAL GROUP B.S.C (GFH)	USD	0.430	0.455	0.025	5.81%
Khaleeji Commercial Bank B.S.C (KHCB)	BHD	0.105	0.110	0.005	4.76%
Aluminium Bahrain B.S.C. (ALBH)	BHD	0.515	0.535	0.020	3.88%

Three Top Decliners

Company Name	Currency	Previous	Closing	Change	% Change
INOVEST B.S.C (INOVEST)	USD	0.430	0.360	-0.070	-16.28%
Seef Properties (SEEF)	BHD	0.224	0.202	-0.022	-9.82%
Bahrain Commercial Facilities Company (BCFC)	BHD	0.690	0.680	-0.010	-1.45%

Index Activity of the week

	Opening	Closing	Change	% Change
Bahrain Islamic Index	1015.72	1035.5	19.78	1.95 ↑

Bahrain Islamic Index (Daily)

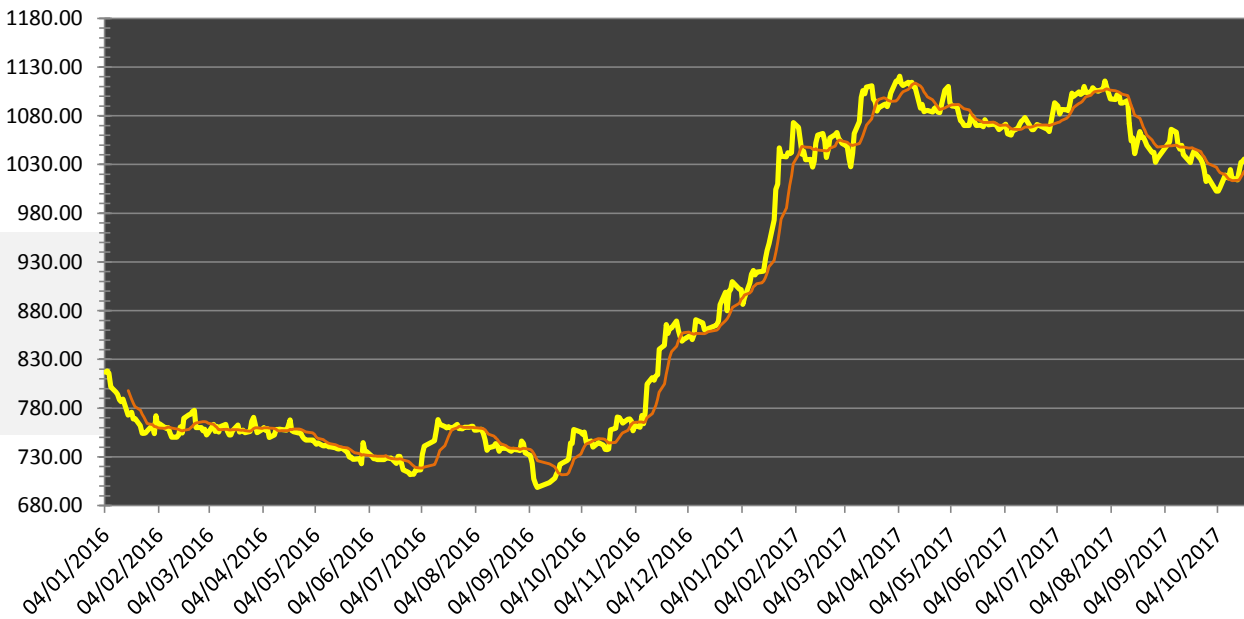


Chart Information

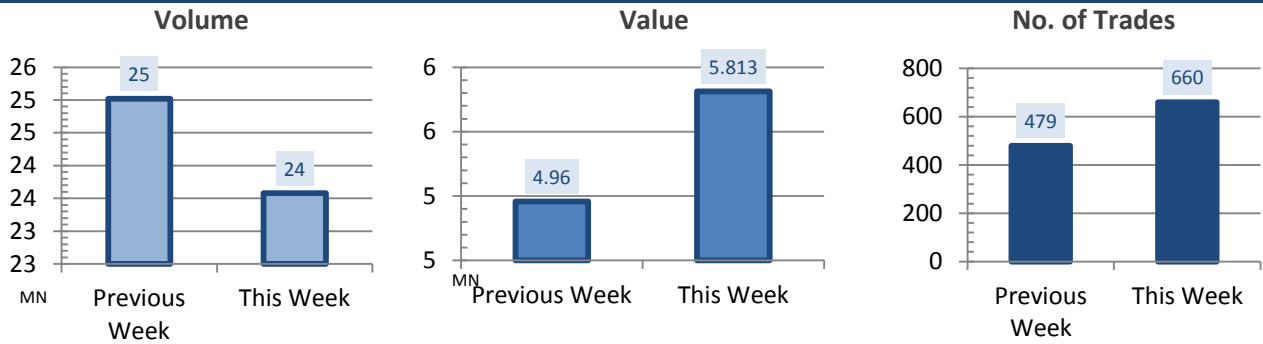
	Start Point	End Point	High	Low	Change	% Change
Bahrain Islamic Index	816.95	1035.5	1,120.72	698.65	218.55	26.75% ↑

The above chart starts a Monday, January 04, 2016 and ends on Thursday, October 19, 2017

— 50 Day Moving Average

Report from 2017-10-15 TO 2017-10-19

Market Activity



Percentage Change Comparison		
Volume	Value	No. of Trades
-5.76% ↓	17.22% ↑	37.79% ↑

Weekly Trading Average (5 Days)	
Average Value of traded Shares (BD)	1,162,514
Average Volume of shares	4,715,569
Average No. of Transactions	132

Five Best Performance By Volume				
Symbol	Currency	Volume	Value	Trades
GFH FINANCIAL GROUP B.S.C (GFH)	USD	9,250,289	1,545,560	77
Ahli United Bank B.S.C (AUB)	USD	5,294,083	1,364,975	66
Aluminium Bahrain B.S.C. (ALBH)	BHD	2,581,211	1,349,721	63
Seef Properties (SEEF)	BHD	1,834,963	383,245	346
Arab Banking Corporation (ABC)	USD	1,511,487	164,017	22

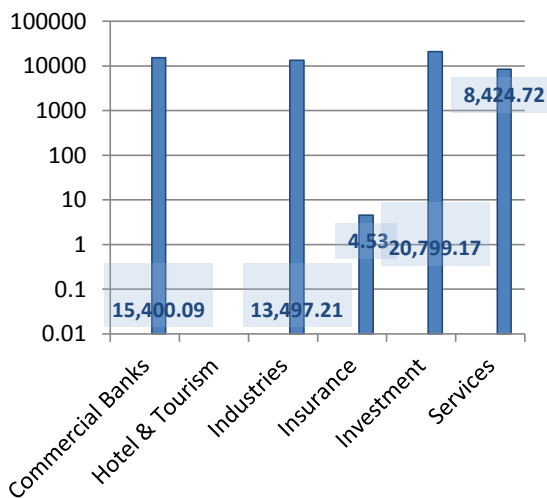
Five Best Performance By Value				
Symbol	Currency	Value	Volume	Trades
GFH FINANCIAL GROUP B.S.C (GFH)	USD	1,545,560	9,250,289	77
Ahli United Bank B.S.C (AUB)	USD	1,364,975	5,294,083	66
Aluminium Bahrain B.S.C. (ALBH)	BHD	1,349,721	2,581,211	63
Seef Properties (SEEF)	BHD	383,245	1,834,963	346
BMMI B.S.C (BMMI)	BHD	375,758	494,418	1

Five Best Performance By Number of Trades				
Symbol	Currency	Trades	Value	Volume
Seef Properties (SEEF)	BHD	346	383,245	1,834,963
GFH FINANCIAL GROUP B.S.C (GFH)	USD	77	1,545,560	9,250,289
Ahli United Bank B.S.C (AUB)	USD	66	1,364,975	5,294,083
Aluminium Bahrain B.S.C. (ALBH)	BHD	63	1,349,721	2,581,211
Arab Banking Corporation (ABC)	USD	22	164,017	1,511,487

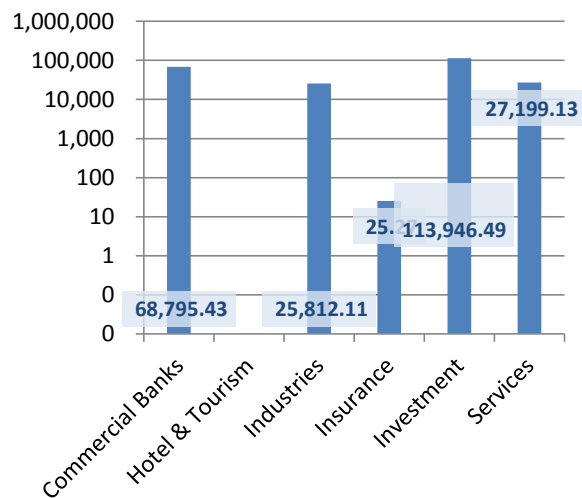
Report from 2017-10-15 TO 2017-10-19

Sector Summary						
Sector	% of Companies Traded	No. of Co. Traded	No. of Co. in Sector	No. of Trades	Value	Volume
Commercial	100.00%	7	7	108	1,540,009	6,879,543
Investment	45.45%	5	11	115	2,079,917	11,394,649
Services	60.00%	6	10	373	842,472	2,719,913
Insurance	20.00%	1	5	1	453	2,527
Hotels	0.00%	0	4	0	0	0
Industrial	33.33%	1	3	63	1,349,721	2,581,211
IPO	0.00%	0	0	0	0	0
Preff. Shares	0.00%	0	0	0	0	0
Closed Co.	0.00%	0	2	0	0	0
Non Bahraini	0.00%	0	1	0	0	0
Total	46.51%	20	43	660	5,812,570	23,577,843

Value (BD 000)



Volume (000)



Sectoral Index Activity				
Sector	Opening	Closing	Change	% Change
Commercial Banks	2,699.00	2,687.23	-11.770	-0.440 ↓
Hotel & Tourism	2,920.43	2,920.43	-	-
Industries	830.49	861.91	31.420	3.780 ↑
Insurance	1,663.68	1,663.68	-	-
Investment	640.95	650.27	9.310	1.450 ↑
Services	1,102.83	1,083.99	-18.840	-1.710 ↓